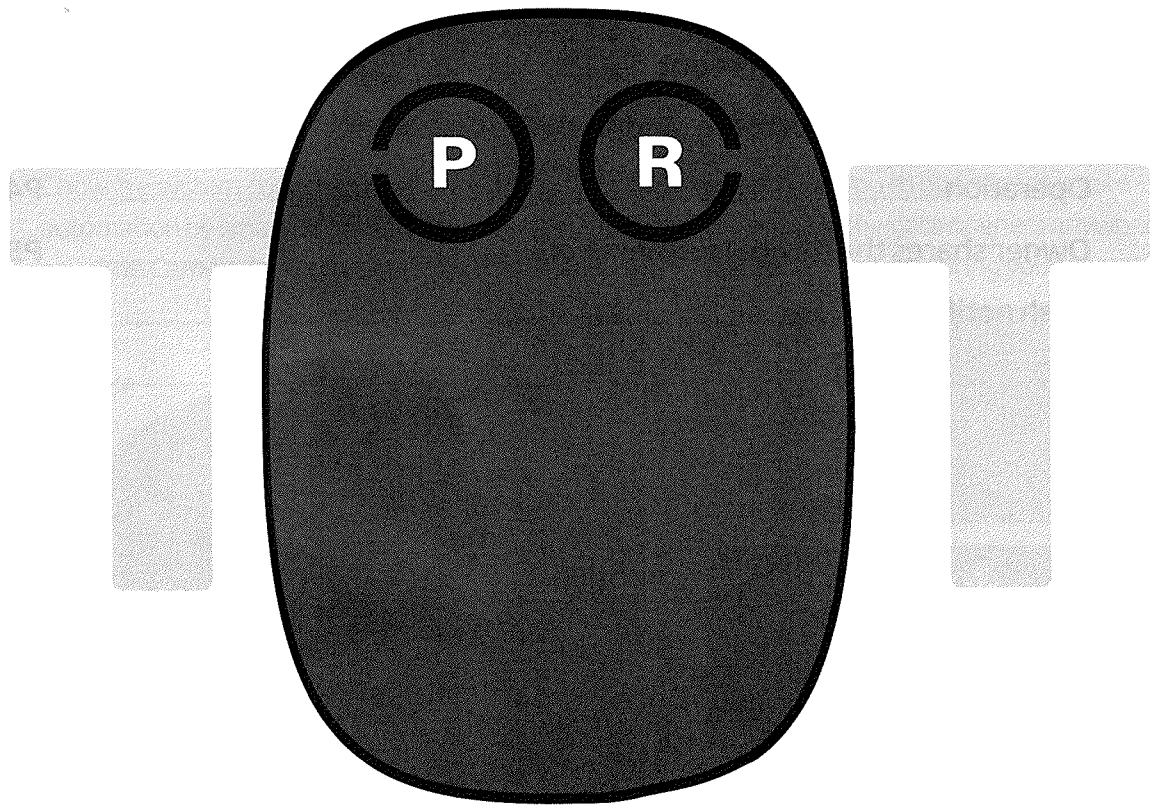


Chow UserManual



WiFi/Bluetooth Module



www.tmt-automation.com

Index

Safety instructions	P1
Product description	P1
Apply for a new Chow account	P2
Connect the WiFi/Bluetooth Module to the Chow!App	P3
Operation	P4
Owner shares the device to other users	P5
Push notification	P6
FAQ	P7

WARNING

Safety Instructions

Please read this manual carefully before installation. TMT Automation Inc. is not responsible for improper installation and failure to comply with local electrical and building regulations. Please keep all the components of the ChowCAM and this manual for further consultation.

Safety instructions

WARNING:

Please read this manual carefully before installation. TMT Automation Inc. is not responsible for improper installation and failure to comply with local electrical and building regulations. Please keep all the components of the Wifi box and this manual for further consultation.

Please do NOT connect the Wifi box to Chow while the gate or garage door is running.

Please check if the gate automation works properly before using Chow.

DO NOT make any modifications to any components except that it is mentioned in this manual.

Children are NOT allow to use Chow without adults supervision.

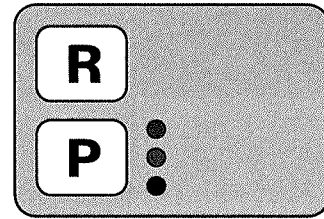
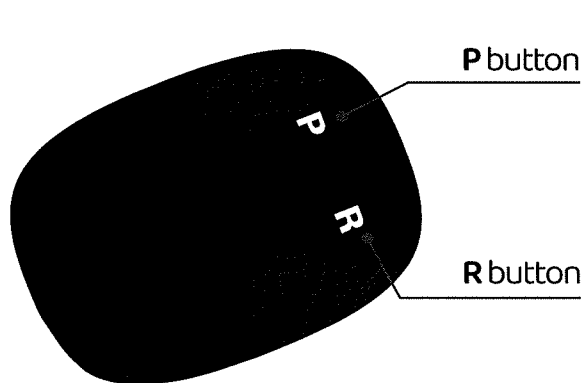
Chow can only be operated when you have a view of your gate or garage door.

Please check there is no obstacles during operation.

Product description

Chow_Smart phone controlled gate opener

Chow is a system connecting gate opener to smart phones, allowing you to operate your gate automation by smart phones. Chow allows multiple users to operate the gate openers anywhere any time. Camera is recommended to be installed with Chow to have a view during your operation.



Before starting pairing

1. Press the (P) button for 5 seconds and release it.
2. Press the (R) button once to reboot the WiFi/bluetooth module.

LED indications and buttons

Return to the factory setting:

Press the (P) button for 5 seconds and press the (R) button.

The Blue LED starts to blink. The smart control box has returned to the factory setting

Blue LED:

Blue LED is a indicator for the Bluetooth connection.

Green LED:

Green LED is a indicator for the WiFi connection.

Red LED:

Red LED blinks indicates wrong ful operations or system errors.

Please refer to FAQ when the Res LED is ON.

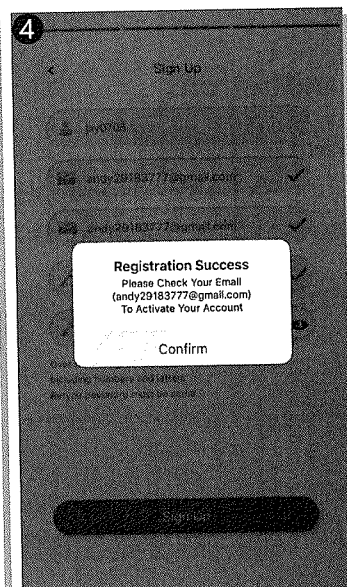
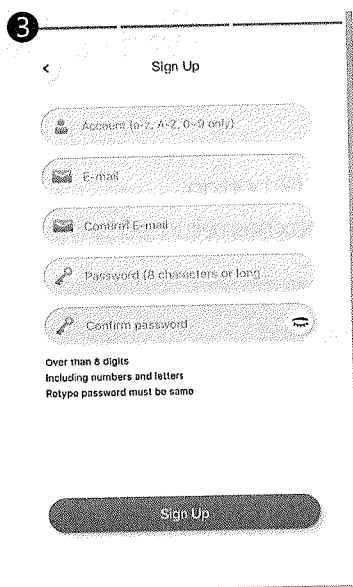
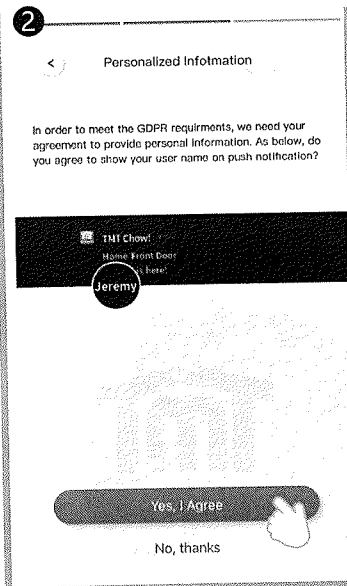
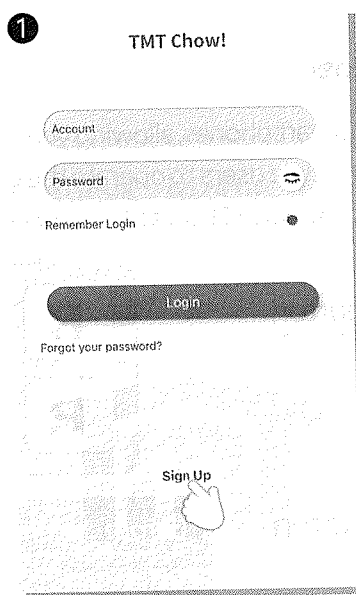
Apply for a new Chow! account

1. Please scan the QR code and download the Chow! App
2. Press sign up icon and press the agree icon to continue
3. Please type the following information for registration:



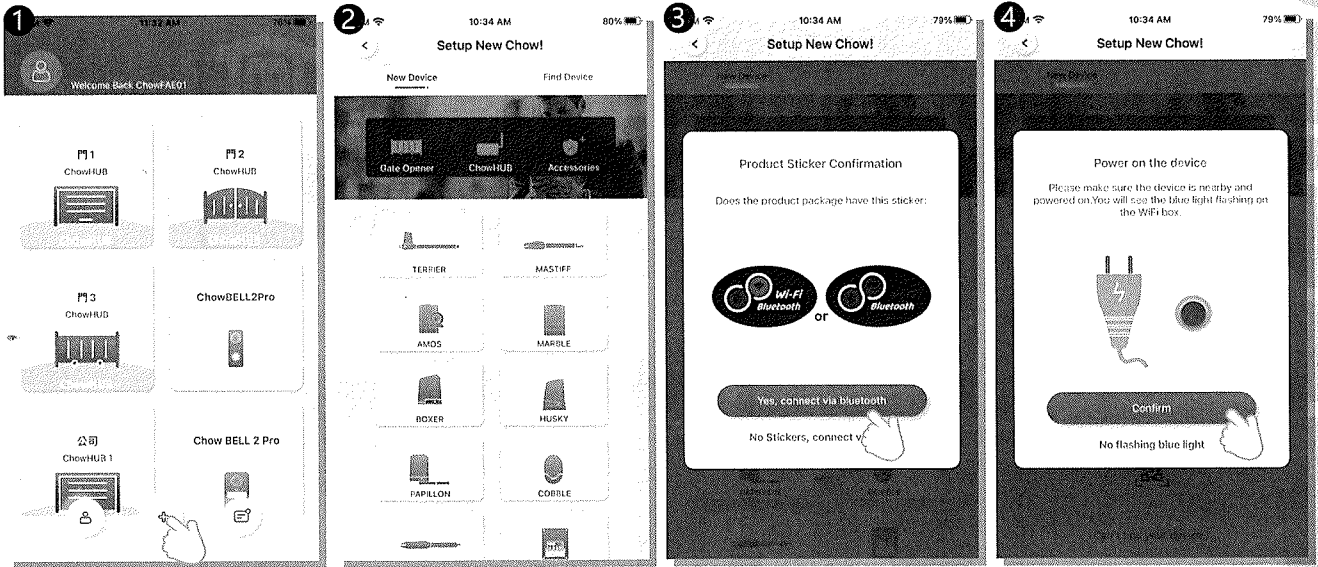
- a. Email(enter twice for verification)
- b. Password(enter twice for verification)
- c. The password should have at least 1 English character and at least 8 characters in total

4. The system will send a link to your email when the registration succeedec.
5. Please go to your email, and click the link to activate your Chow! account.
6. Please log in your Chow! account.

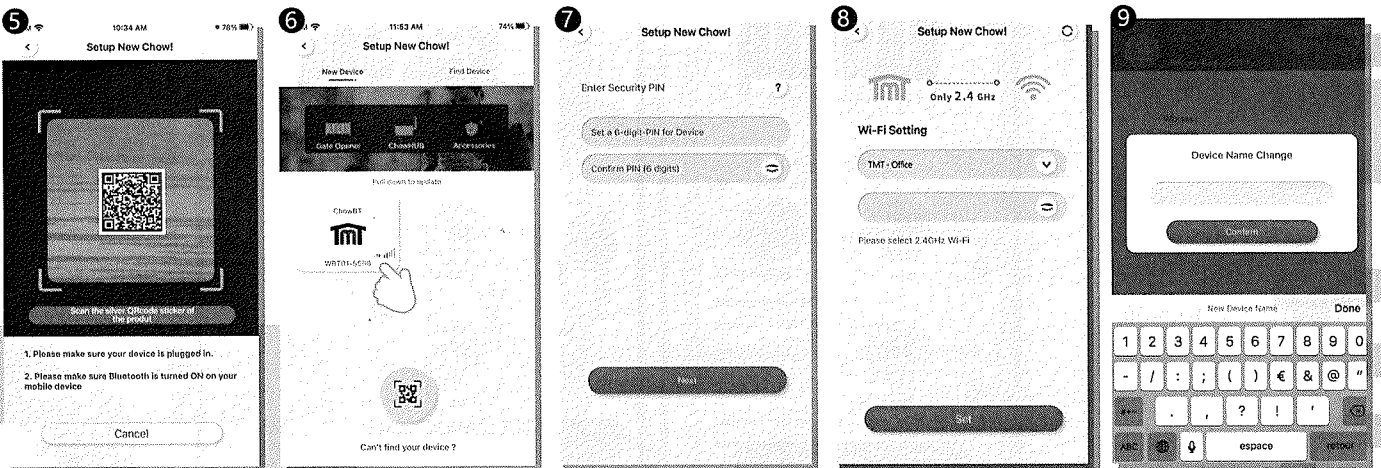


Connect the Wifi/Bluetooth Module to the Chow! App

1. ****Please turn ON the Bluetooth function of your smart-phone****
2. Tap the (+) icon to add new device.
3. Tap the type of your device to add a new device.
4. Please check if the product has the WBT sticker.



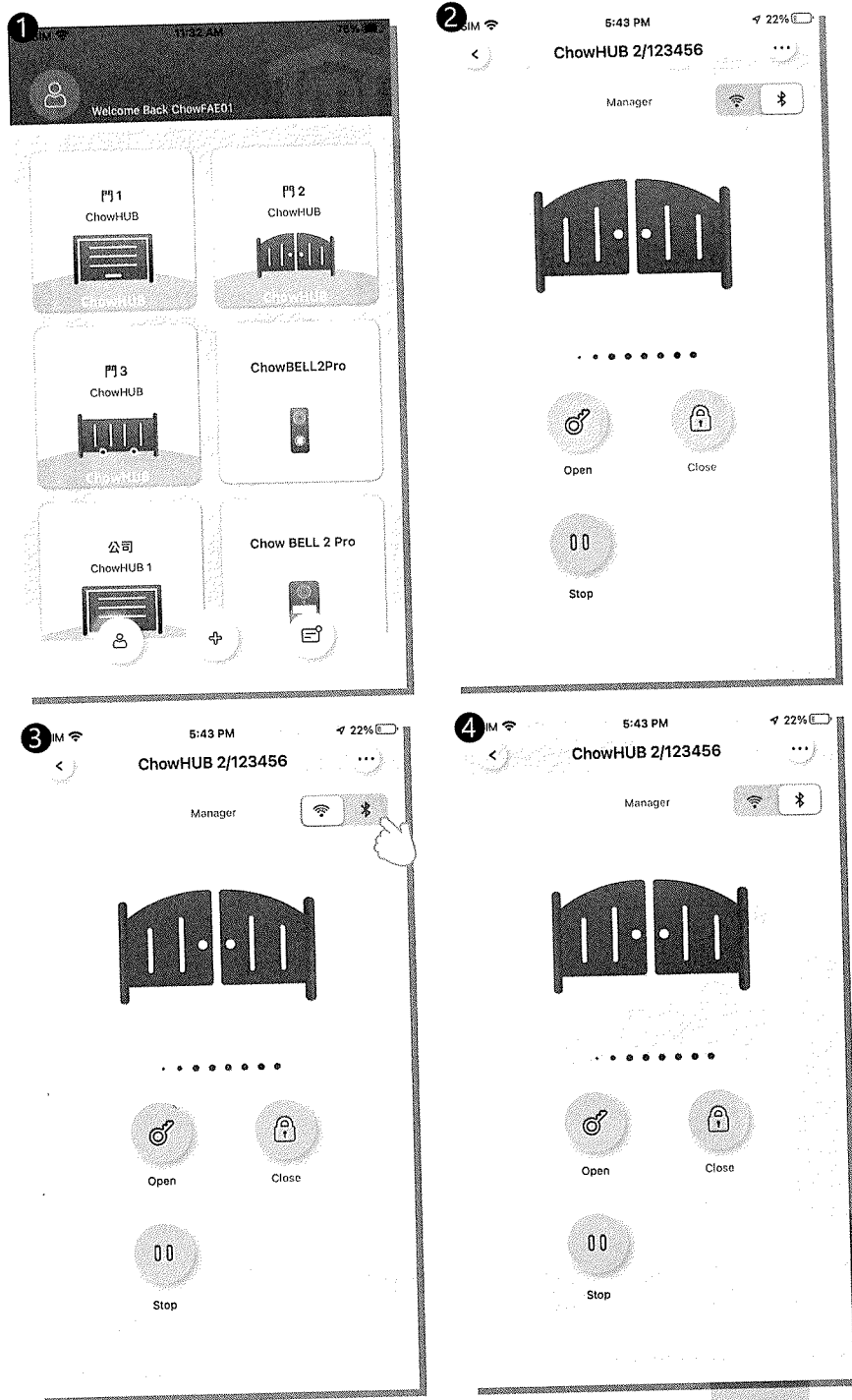
5. Please check if you power the device.
6. Please select your device or scan QRcode on device.
7. Set a security PIN code by enter the same code twice.
8. Entering the correct password of your Wi-Fi.
9. After connection countdown, you can name your device.



Operation

1. Tap the device on your main page.
2. Tap the Open/Stop/Close to control gate opener.
3. Tap the Bluetooth icon to switch to Bluetooth control mode.

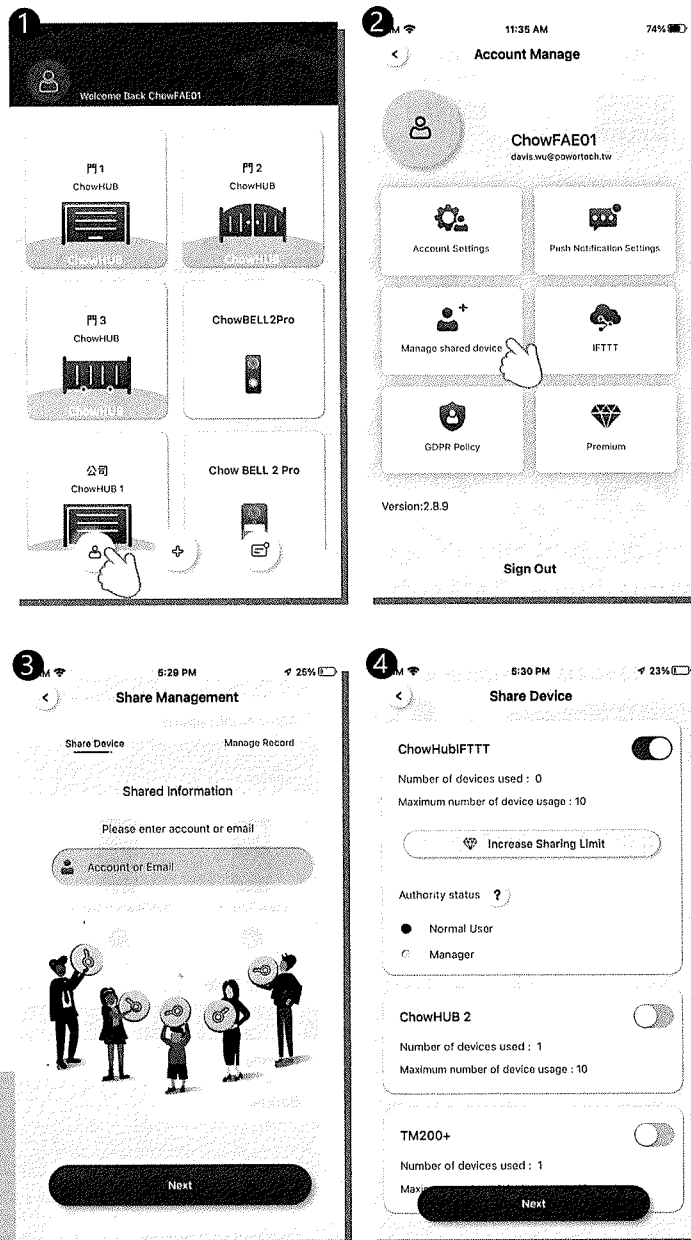
****Please turn ON the Bluetooth function of your smartphone****



Note: Only one user can access the Bluetooth control mode. Once the first user leaves this operation page, the second user can access this device.

Owner shares the device to other users

1. Press the icon on the corner to enter the account management page.
 2. Tap the manage shared device.
 3. Enter the account which you are going to share.
 4. Choose the device you are going to share and tap next.
- a. The Owner can decide the permission of device sharing.
A manager can share and operate this device, but a normal user can only operate it.
- b. One device can only be shared to 10 users.



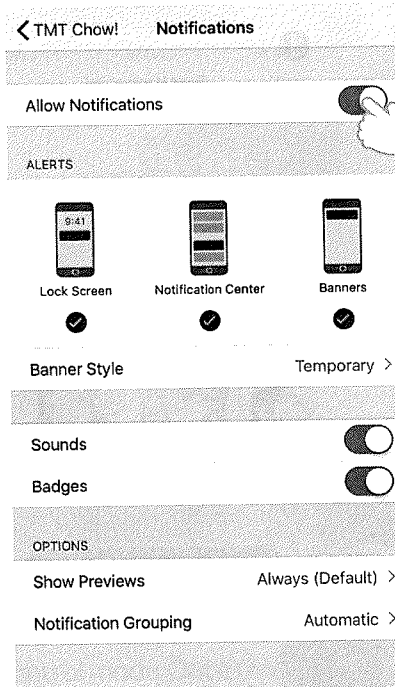
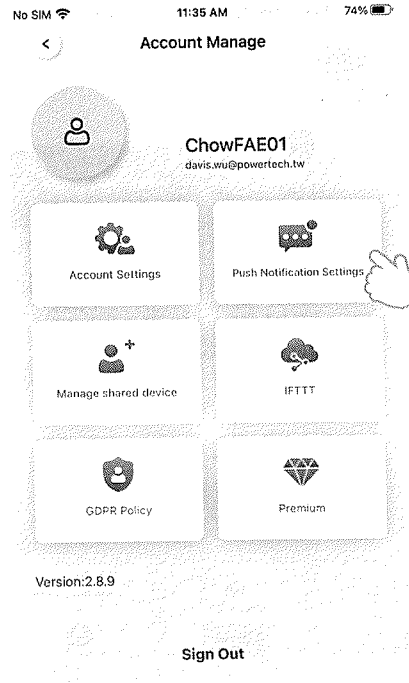
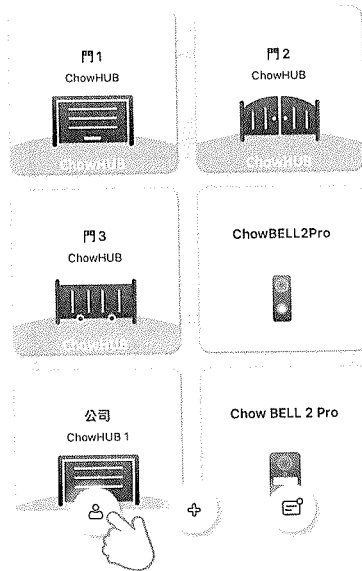
Push notification

Press the icon on the corner to enter the account management page.

Tap the push notification setting.

Turn ON the switches of the notification.

****Please go to the settings page of your smartphone,
Find TMT Chow! and allow the notifications****



FAQ

Question 1 The Blue LED is NOT Blinking when pairing.

Answer 1 Press (P) button of the Wi-Fi box.

Question 2 Blue and Green LED blinks alternatively when Connecting to Chow by the first user.

Answer 2 Entering a wrong password to your Wifi network.

Question 3 RED blink when Connecting to Chow by the first user.

Answer 3 The Wifi box cannot get a IP from the router. Please disconnect other device.

Question 4 RED blink when Enter the PIN code.

Answer 4 Entering the wrong PIN code. Please check with the first user.

Question 5 Green LED is blinking.

Answer 5 Wifi signal is weak. Please adjust the antenna of the Wifi box.

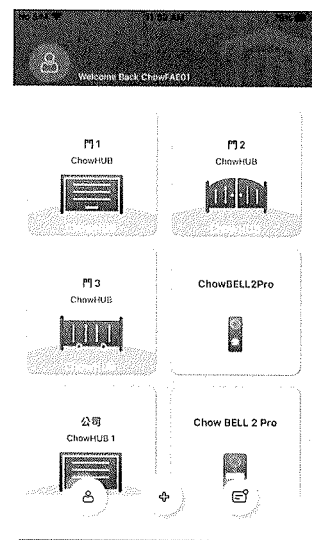
Question 6 Red LED ON.

Answer 6 Red LED ON indicates a system error. Please Return to the factory setting as mentioned bellow.

Question 7 Return to the factory setting.

Answer 7 Return to the factory setting is used when you lose your PIN code for sharing the device. After return to the factory setting, please follow the previous indications to reconnect the Chow.

1. Tap the device icon on the main page for 3 seconds and delete the device
2. Open the Wifi box, press the (P) button for 5 seconds and release it.
3. Plug out the and reconnect the write to restart the Wifi box.
4. Do the (C1. Connecting to Chow by the first user) to get a new PIN code.



Question 8 How should I change my PIN code.

Answer 8 Enter the operation page of the device in Chow-> Click the (Device information) in the setting page -> Tap(PIN Code Setting)